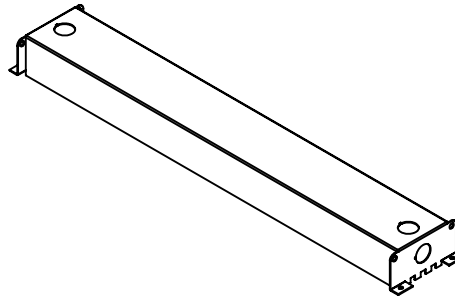
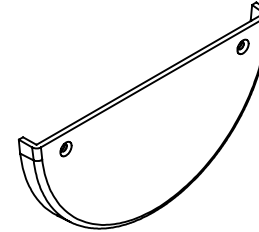




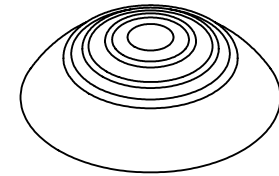
ALB MAIN EXTRUSION
 SLP-EXT-HB-24
 SLP-EXT-HB-46
 SLP-EXT-HB-92



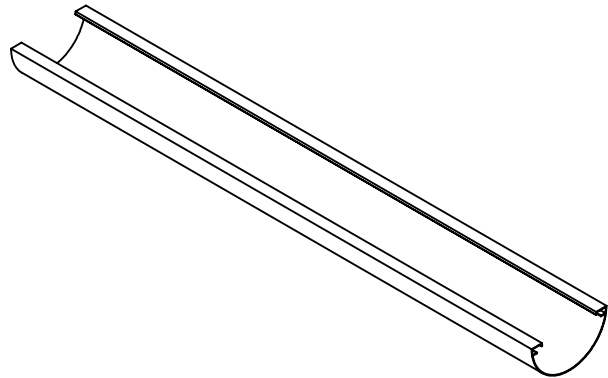
DRIVER COVER
 ALB-DCOVER



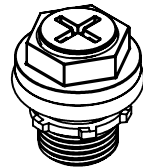
END CAP
 ALB-ENDCAP



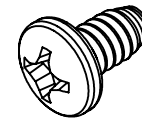
END PLUG
 CT-ENDPLUG-B



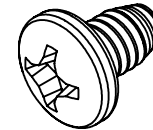
EXTRUDED DIFFUSER
 ALB-EXT-PC-46-CLR
 ALB-EXT-PC-46-FST
 ALB-EXT-PC-46-WHT
 ALB-EXT-AC-46-CLR
 ALB-EXT-AC-46-FST
 ALB-EXT-AC-46-WHT



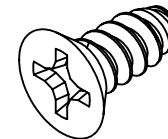
1/2 HUB
 CT-DCB-.5



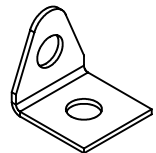
#6 TYPE B ROUND HEAD THREADING SCREW
 ASSCT2



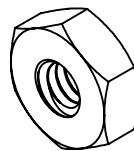
#8 TYPE B X .25 ROUND HEAD THREADING SCREW
 SLP-8BRH-25-ZP



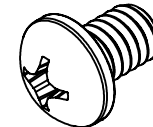
#8 TYPE B X .25 FLAT HEAD THREADING SCREW
 SLP-8BFH-25-ZP



CABLE MOUNTING BRACKET
 ALB-CABLEBKT

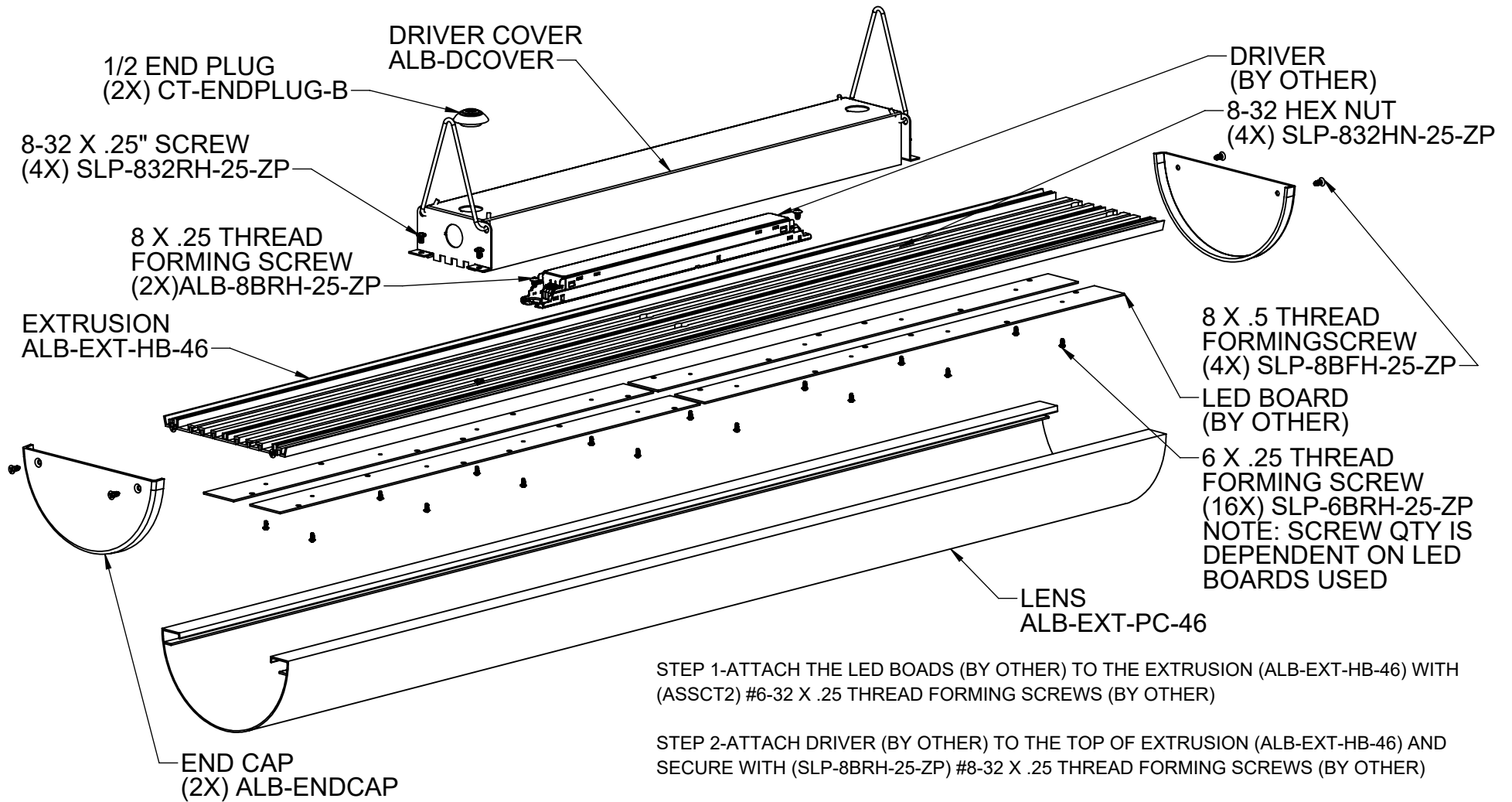


#8-32 HEX NUT
 SLP-832HN-ZP



#8-32 X .25 ROUND HEAD MACHINE SCREW
 SLP-832RH-25-ZP

ASSEMBLY GUIDE



STEP 1-ATTACH THE LED BOARDS (BY OTHER) TO THE EXTRUSION (ALB-EXT-HB-46) WITH (ASSCT2) #6-32 X .25 THREAD FORMING SCREWS (BY OTHER)

STEP 2-ATTACH DRIVER (BY OTHER) TO THE TOP OF EXTRUSION (ALB-EXT-HB-46) AND SECURE WITH (SLP-8BRH-25-ZP) #8-32 X .25 THREAD FORMING SCREWS (BY OTHER)

STEP 3-ATTACH THE DRIVER COVER (ALB-DCOVER) OVER DRIVER AND SECURE WITH (SLP-832RH-25-ZP) #8-32 X .25 THREAD ROUND HEAD SCREWS AND 8-32 NUTS

STEP 4- ATTACH CABLE MOUNTING BRACKETS (ALB-CABLEBKT) TO THE TOP HOLES AT THE END OF THE DRIVER COVER (ALB-DCOVER)

STEP 5- SLIDE DIFFUSER DOWN THE ALUMINUM EXTRUSION. ATTACH THE END CAPS (ALB-ENDCAP) TO THE ENDS WITH (SLP-8BFH-25-ZP) #8-32 FLAT HEAD THREAD FORMING SCREWS (BY OTHERS)

DATE:

REV:

ASSEMBLY GUIDE

Page 2 of 2

1400 South Old Highway 141 Fenton, MO 63026

PH (636) 600-4084 FX (636) 600-4106 www.SLPlighting.com

SLP
LIGHTING
A SOLID STATE LIGHTING COMPANY